

Manyuering Spring Rogaine

WARA Spring 24 Hour Rogaine
16 / 17 August 2008



Setters and Veters

Warren Smith
 Bryan McClintock
 Patrick Tremlett
 Greg Kirk

Thanks to:

Jamie Ridley and Elisha Skillen
 of DEC Mundaring District.



LEGEND

- Building
- Continuations
- Control
- Contours
- Dam
- Fence
- Plantation
- Hash House
- Magnetic North Line
- Out of Bounds
- Patrolled Road
- Road, Sealed
- Road, Major Gravel
- Road, Minor Gravel
- Railway Line (disused)
- Watercourse
- Water Drop
- Swamp

Thanks To The Farmers

Peter Bush and Nicola Elton
 Ian and Jenny McColl
 Rob and Anne Chester
 Susan O'Grady and Michael Waters
 Stephen Hall and Linda Ketteridge
 Clive and Pamela Owen

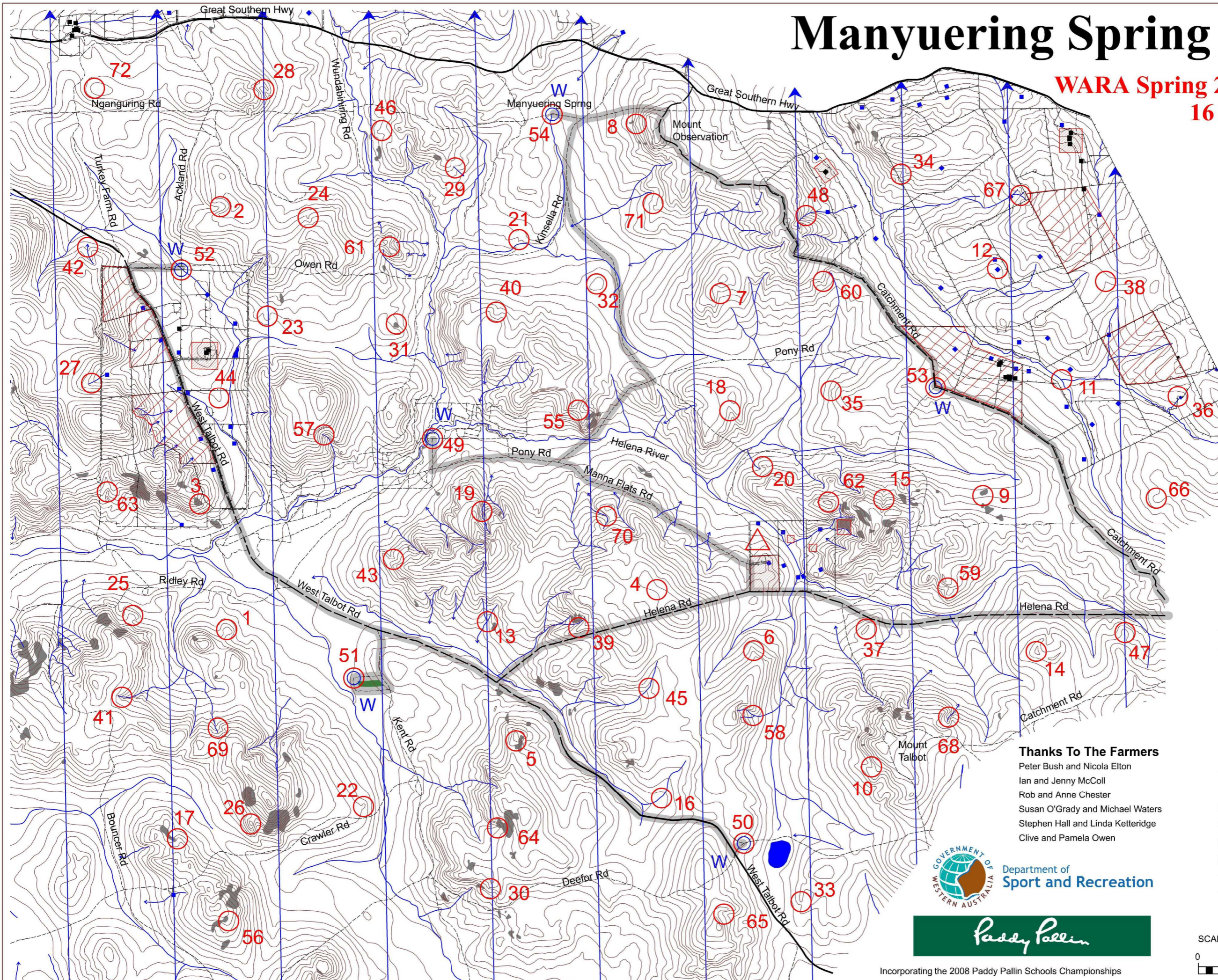


Department of
Sport and Recreation

Paddy Pallin

Incorporating the 2008 Paddy Pallin Schools Championships

SCALE 1:50,000, 5 metre contour interval



This map was produced using OCAD 9 by the Western Australian Rogaining Association, wa.rogaine.asn.au. Data supplied by Landgate and used under copy licence 393/93. Possession of this map does not give right of entry to this area.

Manyuering Spring Rogaine. WARA Spring 24 Hour Rogaine 16 / 17 August 2008

No.	Description	Points	No.	Description	Points	Important Information
1	A knoll	20	43	The gully	60	
2	A watercourse junction	20	44	The spur	60	
3	The rocky surface	20	45	The watercourse	60	Control Cards
4	The broad saddle	20	46	The broad spur	60	From 1130 Saturday
5	The knoll, south side	20	47	The spur	60	
6	The spur	20	48	The watercourse	60	Briefing
7	The watercourse	20				1145 Saturday
8	The spur	20	49	The track junction (water drop)	70	
9	The area (100x200m) clear of trees, south west side	20	50	A track junction (water drop)	70	Start
10	The gully	20	51	The pine plantation, north west corner (water drop)	70	1200 Saturday
11	The watercourse junction	20	52	The fence junction (water drop)	70	
12	The dam, north west corner	20	53	The road junction (water drop)	70	Finish
			54	Manyuering Spring waterhole (water drop)	70	1200 Sunday
13	The watercourse junction	30				
14	The knoll	30	55	The saddle	80	Hash House
15	The gully	30	56	The spur	80	Opens at 1600 Saturday
16	The broad gully	30	57	The watercourse	80	Closes ~ 1300 Sunday
17	The spur	30	58	The watercourse junction	80	
18	The gully	30	59	Head of the gully	80	Sunset 16th
19	The watercourse	30	60	The spur	80	1750
20	The knoll	30				Moonrise 16th
21	The spur	30	61	The saddle, east side	90	1718
22	The spur	30	62	The knoll	90	Sunrise 17th
23	The spur	30	63	The watercourse	90	0651
24	The watercourse	30	64	Head of a gully	90	Moonset 17th
			65	Head of the gully	90	0654
25	The spur	40	66	The spur	90	
26	The knoll	40				Late Penalty
27	The gully	40	67	The watercourse junction	100	
28	The watercourse	40	68	The gully	100	10 points per minute
29	The watercourse	40	69	A watercourse junction	100	or part minute
30	The Spur, on edge of rocky breakaway (nice views)	40	70	The gully, on the bend	100	
31	The rocky surface	40	71	The spur, north side	100	
32	The broad knoll	40	72	The broad knoll	100	
33	The spur	40				
34	The spur	40				
35	A gully	40				
36	Fence corner 40 metres @ 280 degrees	40				
37	The knoll	50				
38	The gully	50				
39	The spur	50				
40	A watercourse junction	50				
41	A watercourse junction	50				
42	The watercourse	50				
				Patrolled Roads: refer to map - roads shaded grey		
						Controls Used
						72
						Total Points
						3780